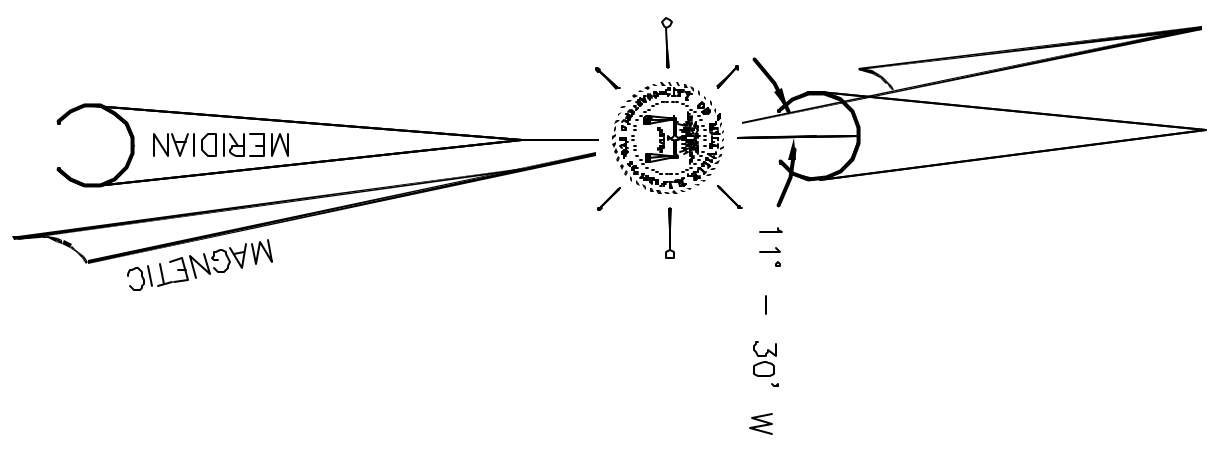


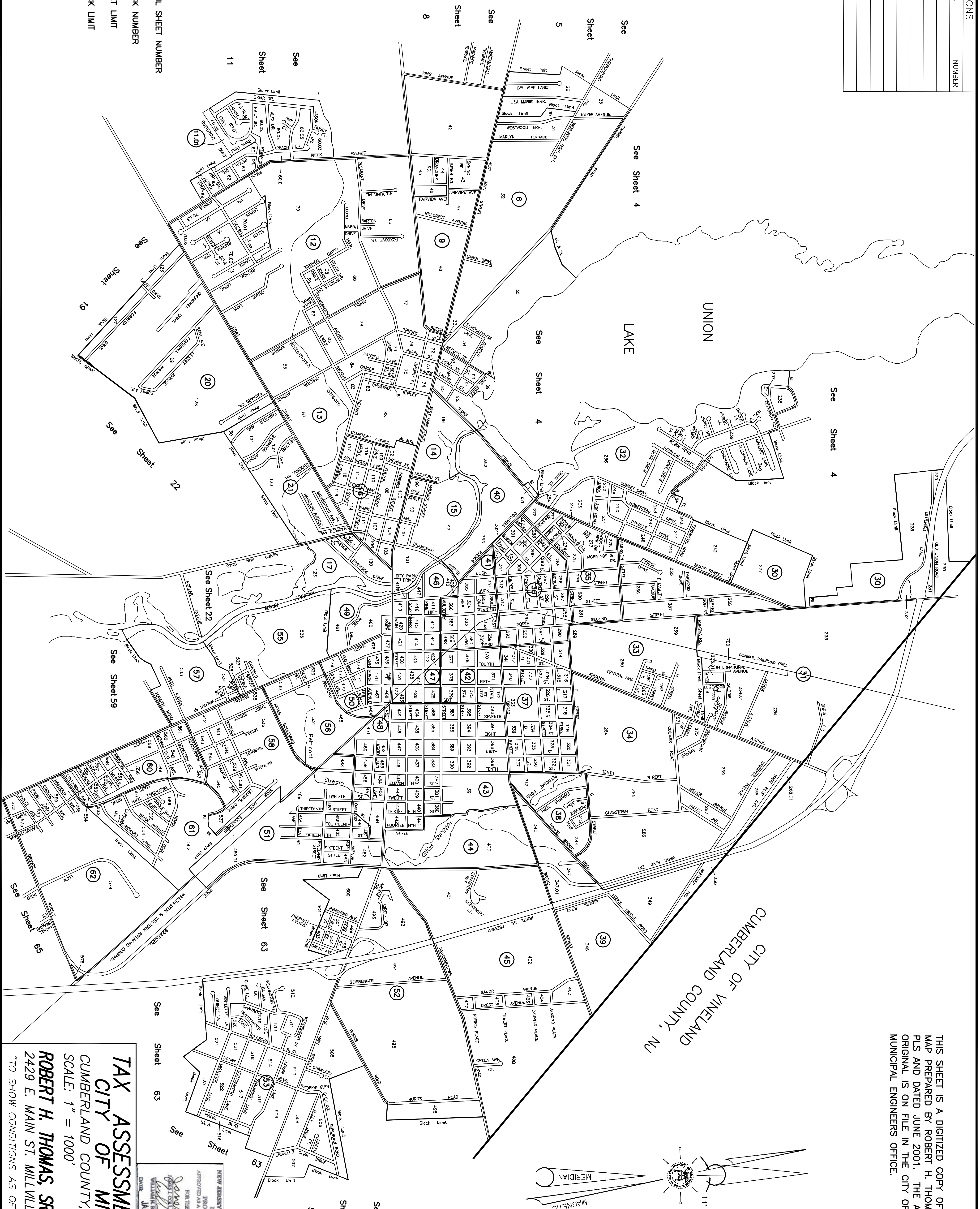
REVISIONS		
DATE	NAME	NUMBER

THIS SHEET IS A DIGITIZED COPY OF THE TAX MAP PREPARED BY ROBERT H. THOMAS SR., PLS AND DATED JUNE 2001. THE APPROVED ORIGINAL IS ON FILE IN THE CITY OF MILLVILLE MUNICIPAL ENGINEERS OFFICE.

CITY OF VINELAND
CUMBERLAND COUNTY, NJ



- LEGEND**
- DETAIL SHEET NUMBER
 - 000 BLOCK NUMBER
 - SHEET LIMIT
 - BLOCK LIMIT



TAX ASSESSMENT MAP
CITY OF MILLVILLE
CUMBERLAND COUNTY, NEW JERSEY
SCALE: 1" = 1000'
ROBERT H. THOMAS, SR., NLS 20371
2429 E. MAIN ST. MILLVILLE, NEW JERSEY
"TO SHOW CONDITIONS AS OF JUNE 16, 2001"

NEW JERSEY DEPARTMENT OF THE TREASURY
PROCESSED BY THE TAXATION
DIVISION OF THE DEPARTMENT OF THE TREASURY
APPROVED AS A TAX MAP SUBMITTAL TO THE ADMINISTRATOR
OF THE DEPARTMENT OF THE TREASURY
DATE: JAN 15 2002
CITY OF MILLVILLE
MUNICIPAL ENGINEERS OFFICE